

Outpost-Eclipse™

Rugged Low-Power GPRS Logger

The Outpost Eclipse is a rugged 2-Channel data logger with internal lithium batteries that connects pulse output meters directly to the web using GPRS. Housed in an innovative enclosure, the Outpost Eclipse is deployed by screwing in the long life battery pack and connecting to the meter.

Data is displayed in web-based graphs & reports according to user-selected application templates, or forwarded to 3rd party databases. Outpost loggers are managed directly from password protected web-consoles.



Outpost-Eclipse Ultra Low-power GPRS

Hardware Features

- Low-power, up to 5-years battery life depending on mode & battery pack
- IP68 case
- Global GPRS communications (coverage as per GSM)
- Optionally connect multiple meters using wireless mesh network (OP5-E-COR model only)

Product Code	Channels 1 & 2	Wireless Expandable
OP5-E-STD	Pulse Counters	No
OP5-E-COR	Pulse Counters	Yes

Web Features

- Web-based Logger Config: True “plug & play” - All configuration performed directly from web-site. No configuration cable connection required.
- Web-based Graphs & Reports: Automatically generated to user selected brandable templates
- Scalable group & user management
- Configure SMS text message & email alarms






Web-based Graphs & Reports

Meter & sensor data is logged into memory and then automatically transferred to Outpostcentral.com website on a user-selected schedule (typically hourly to daily). Browse historical data with an intuitive web-interface. Select from a range of brandable application web templates.



Screenshot: Rate & Totalised Consumption

Application Web Templates

- Water Meter Monitoring  Outpost LiveWater
- Tank Level, Sewer Level Monitoring  Outpost LiveLevel
- Soil Moisture, Irrigation Monitoring  Outpost LiveSoil
- Power Monitoring  Outpost LivePower
- Wind Energy Monitoring  Outpost LiveWind

Contact Outpostcentral.com for a customised template.

Web-based Logger Config

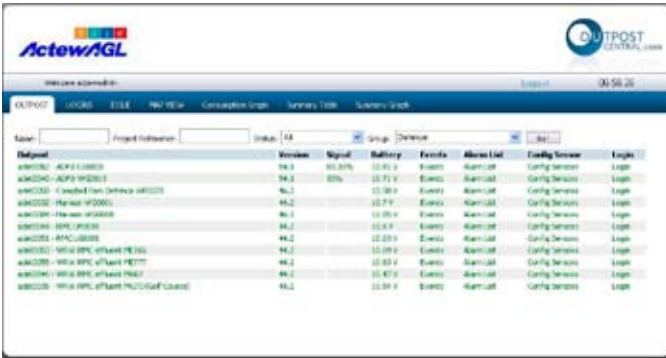
Configure all logger settings from the web. No programming cables required allowing true “Plug & Play” installation.

Website Config Features

- Channel Logging Frequency
- Outpost web-update interval
- Graph & Report template selection
- Timezone, Debug setting

Scalable Group & User Management

Create groups of remote loggers and assign users & passwords with sophisticated user management features. Setup alarms and monitor remote logger performance.



Screenshot: Manage remote loggers from web-console

- Swap loggers between sites while preserving site data & settings
- Manage site details including, Site Name, Site ID, addresses, photographs & notes

Hosted Data Center

Data is stored in Outpostcentral.com dedicated servers. Data is RAID protected with daily backups. Servers are snap-shot mirrored on a schedule and hot-swappable.

Web Management Features

- Monitor remote logger signal strength conditions
- Monitor battery voltage

Technical Specifications

Analog Inputs

▪ Channels	N/A
▪ Accuracy	N/A
▪ Electrical	N/A

Digital Inputs

▪ Channels	2 x Pulse Counter
▪ Electrical	Internal Pull-up to 3.3V Protected to 30V
▪ Frequency	Max 1kHz

Datalogger

▪ Flash Memory Datapoints	1 million
▪ Channel Sampling Rate	Max 1min per channel

Power

▪ Power Input	Internal Lithium
▪ Active Mode Current (GPRS ON)	200mA @ 12V
▪ Idle Mode Current (GPRS OFF)	40mA @ 12V
▪ Power-down Sleep Current	60uA

GPRS

▪ Power Input	900/1800/850/1900Mhz
▪ Antenna	Internal

Physical

▪ Size	35cm x 6cm x 6cm
▪ Weight	150g (5.25 oz)
▪ Operating Temperature	-40 C to 85 C